

Figure 9.1 Composed naming domains used to access a resource from a URL

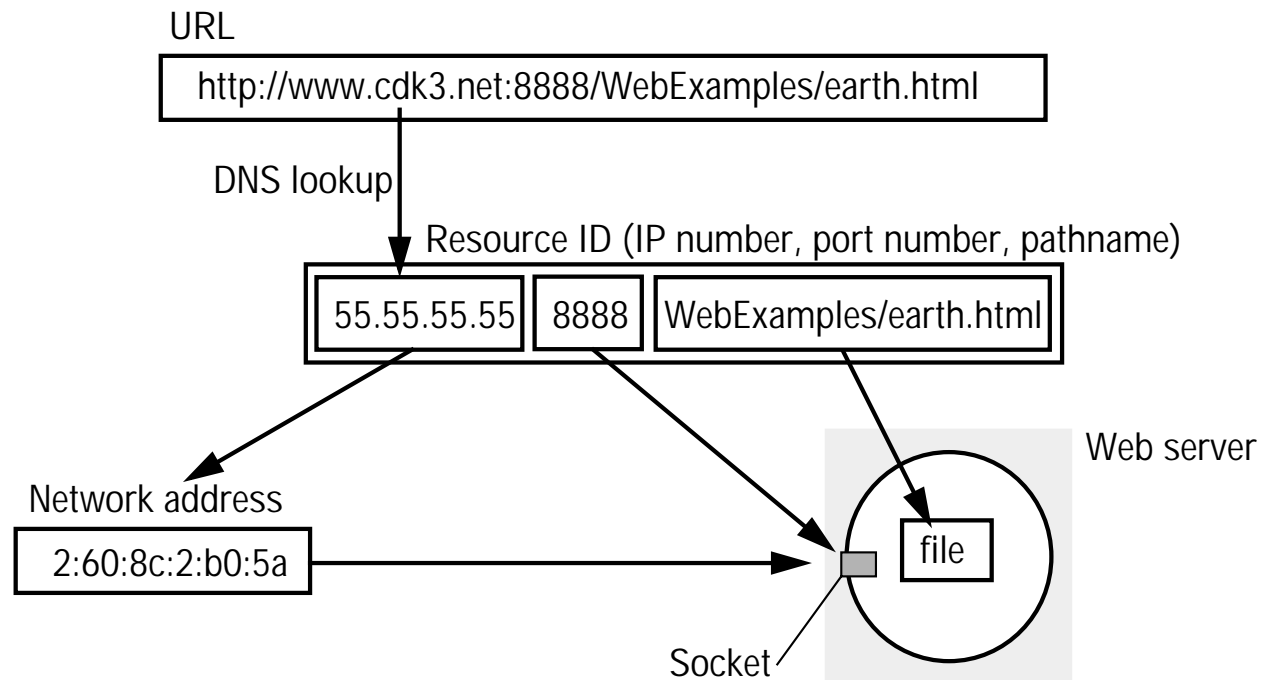
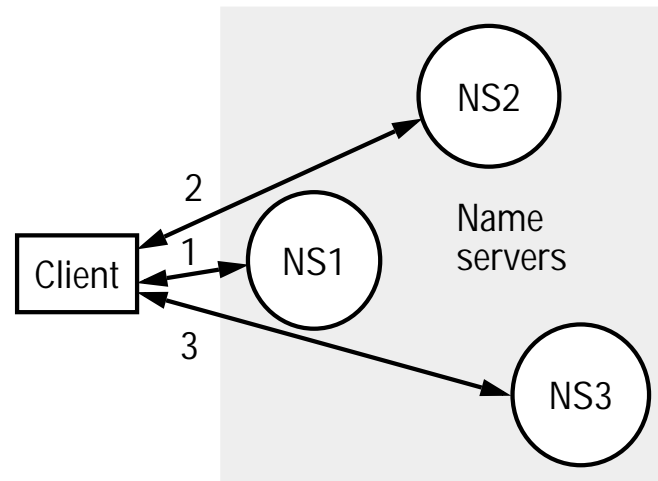
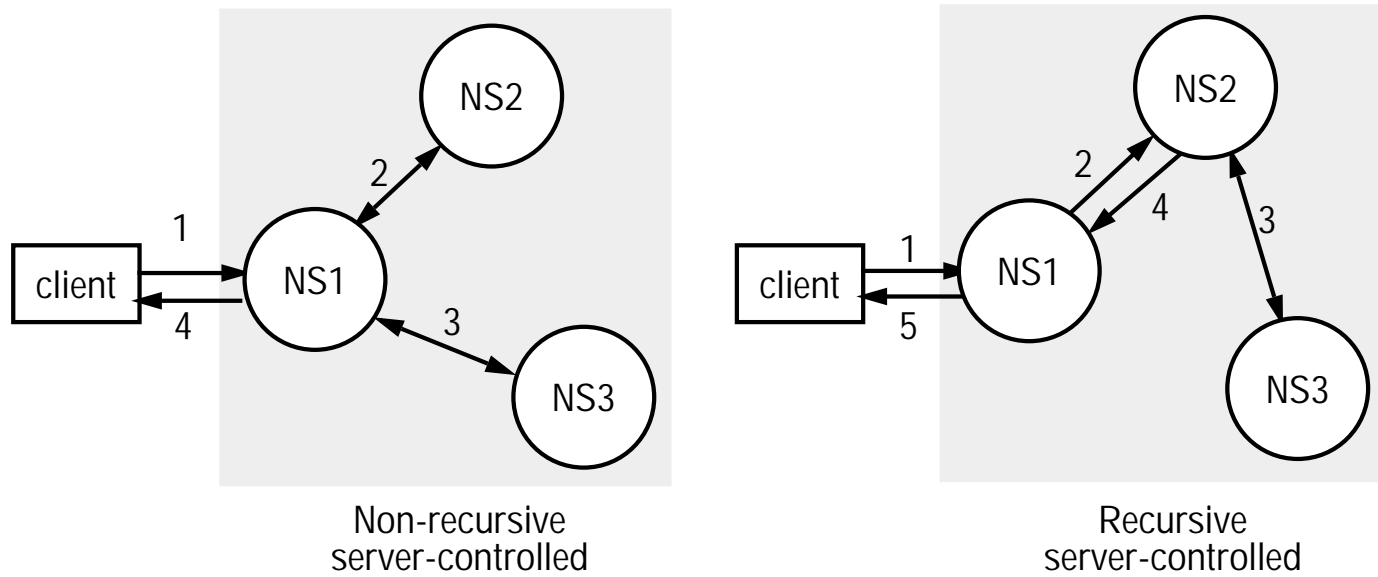


Figure 9.2 Iterative navigation



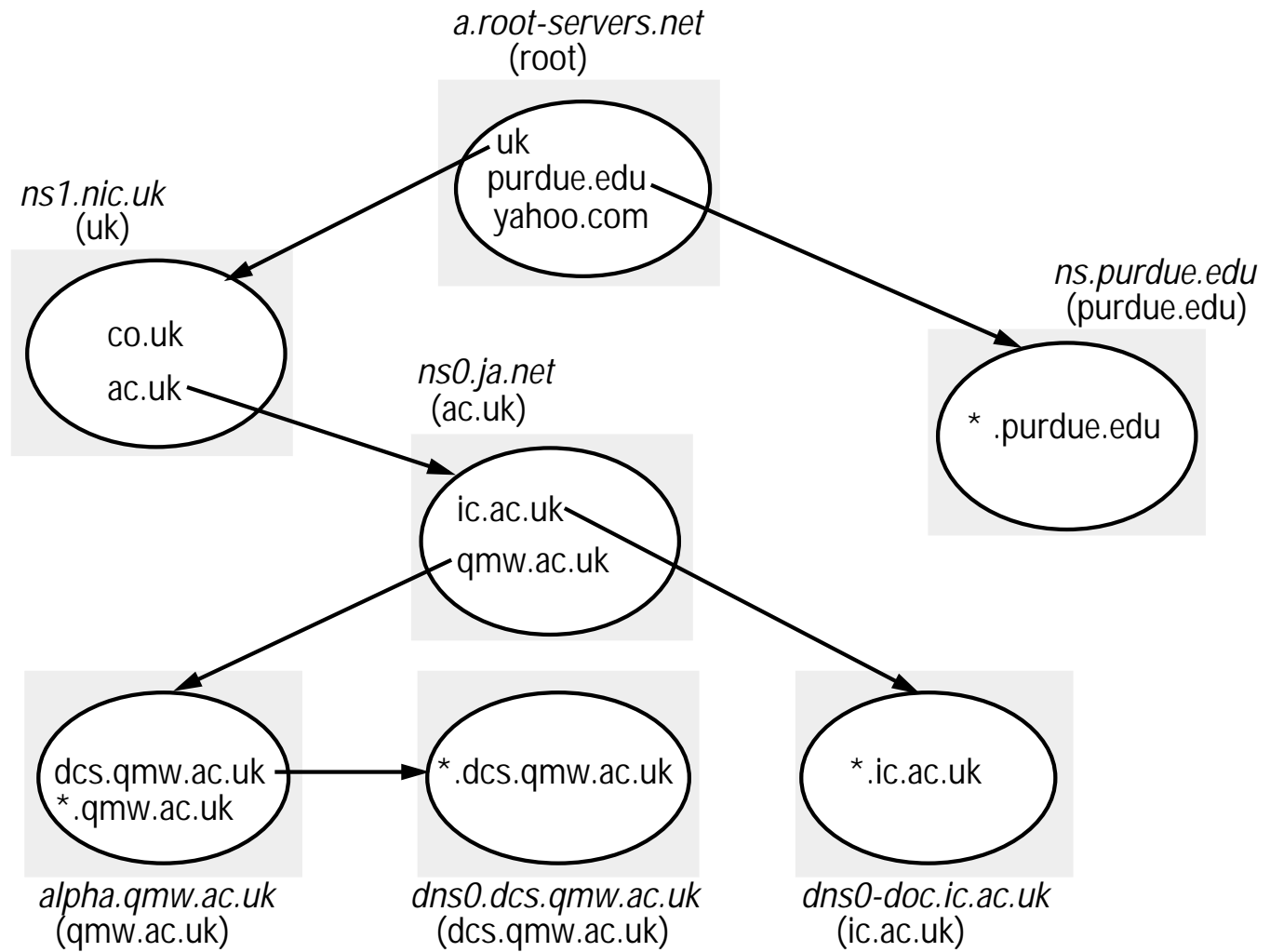
A client iteratively contacts name servers NS1–NS3 in order to resolve a name

Figure 9.3 Non-recursive and recursive server-controlled navigation



A name server NS1 communicates with other name servers on behalf of a client

Figure 9.4 DNS name servers



Note: Name server names are in italics, and the corresponding domains are in parentheses. Arrows denote name server

Figure 9.5 DNS resource records.

<i>Record type</i>	<i>Meaning</i>	<i>Main contents</i>
A	A computer address	IP number
NS	An authoritative name server	Domain name for server
CNAME	The canonical name for an alias	Domain name for alias
SOA	Marks the start of data for a zone	Parameters governing the zone
WKS	A well-known service description	List of service names and protocols
PTR	Domain name pointer (reverse lookups)	Domain name
HINFO	Host information	Machine architecture and operating system
MX	Mail exchange	List of <preference, host> pairs
TXT	Text string	Arbitrary text

Figure 9.6 Service discovery in Jini

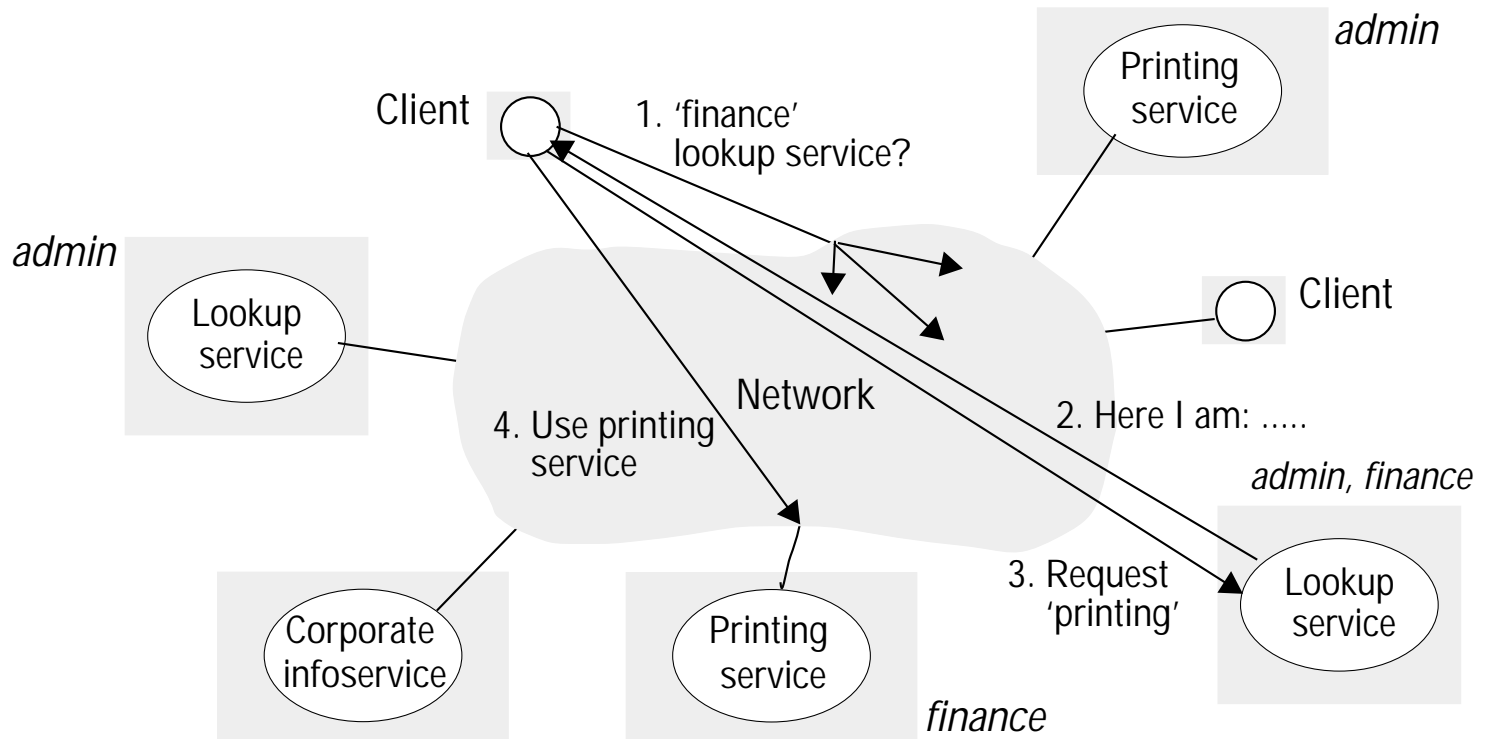


Figure 9.7 GNS directory tree and value tree for user Peter.Smith

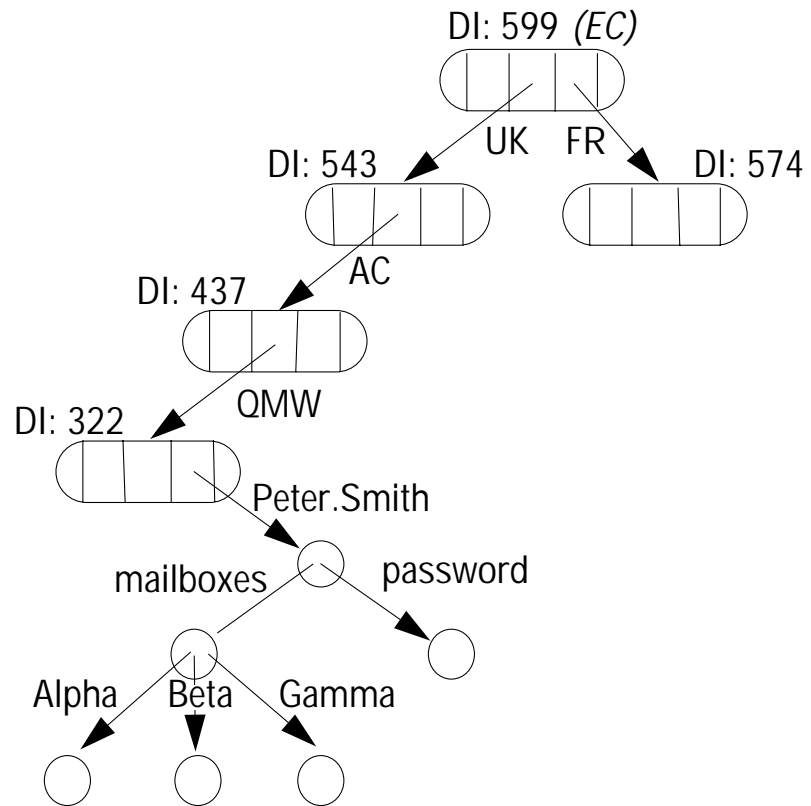


Figure 9.8 Merging trees under a new root

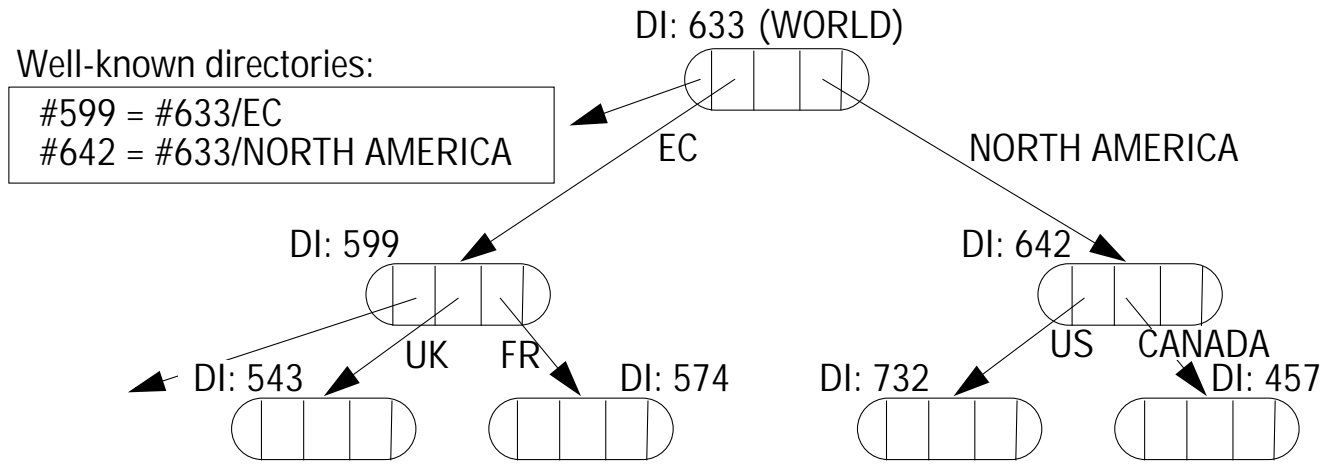


Figure 9.9 Restructuring the directory

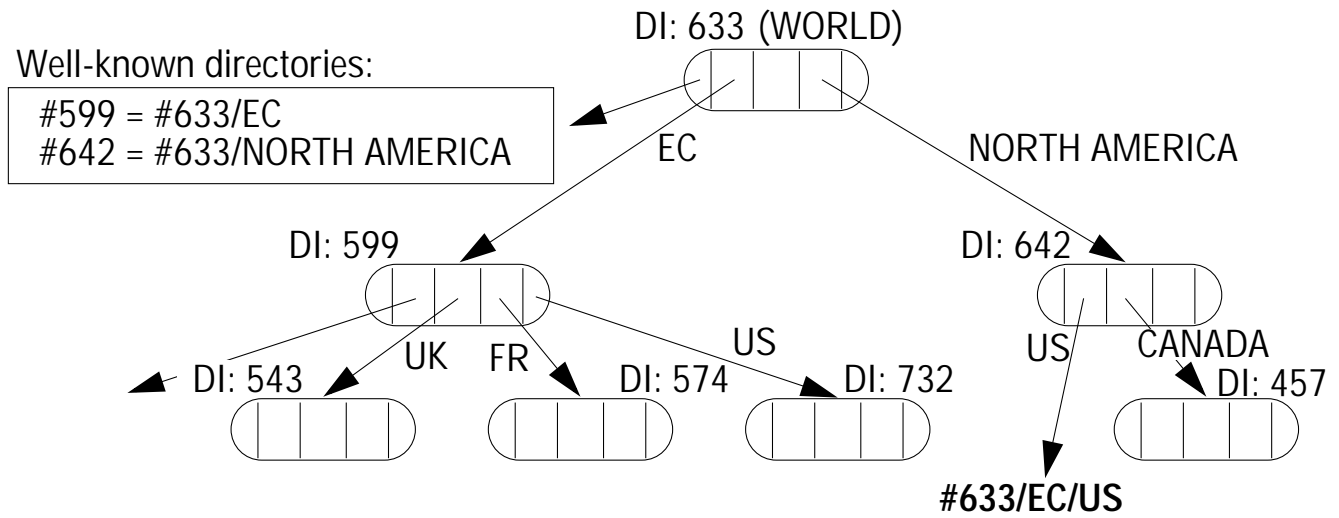


Figure 9.10 X.500 service architecture

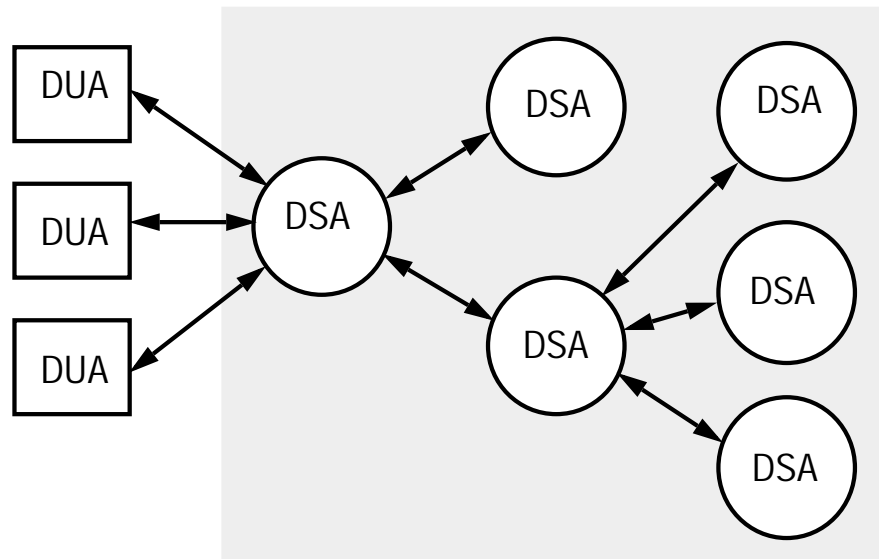


Figure 9.11 Part of the X.500 Directory Information Tree

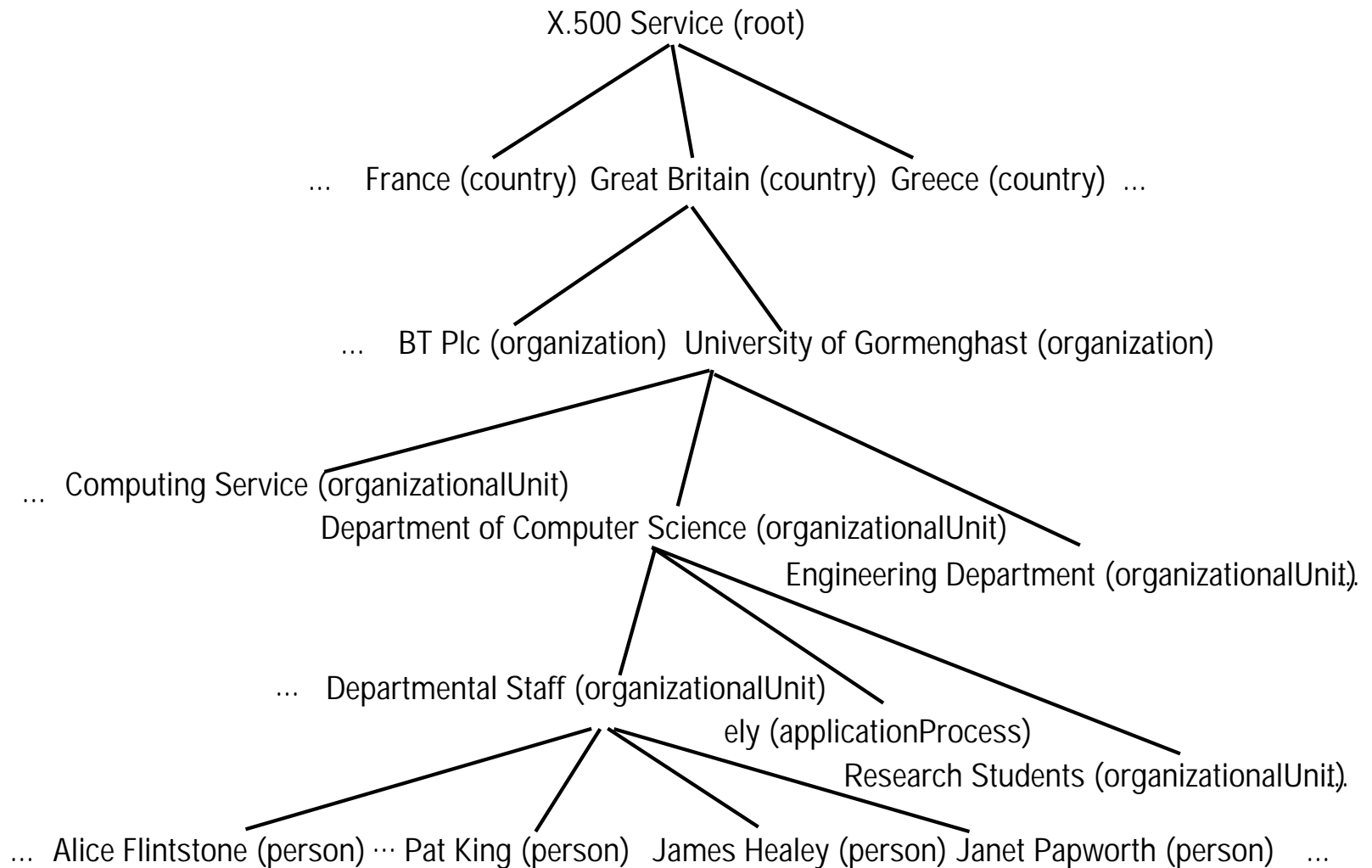


Figure 9.12 An X.500 DIB Entry

info

Alice Flintstone, Departmental Staff, Department of Computer Science,
University of Gormenghast, GB

commonName

Alice.L.Flintstone
Alice.Flintstone
Alice Flintstone
A. Flintstone

surname

Flintstone

telephoneNumber

+44 986 33 4604

uid

alf

mail

alf@dcs.gormenghast.ac.uk
Alice.Flintstone@dcs.gormenghast.ac.uk

roomNumber

Z42

userClass

Research Fellow
